

CERTIFICATE OF LOCATION OF GOVERNMENT CORNER

NORTH QUARTER Corner of Section 1, Township 105 N, Range 39 W, 5th P.M.

STATE OF MINNESOTA, County of MURRAY

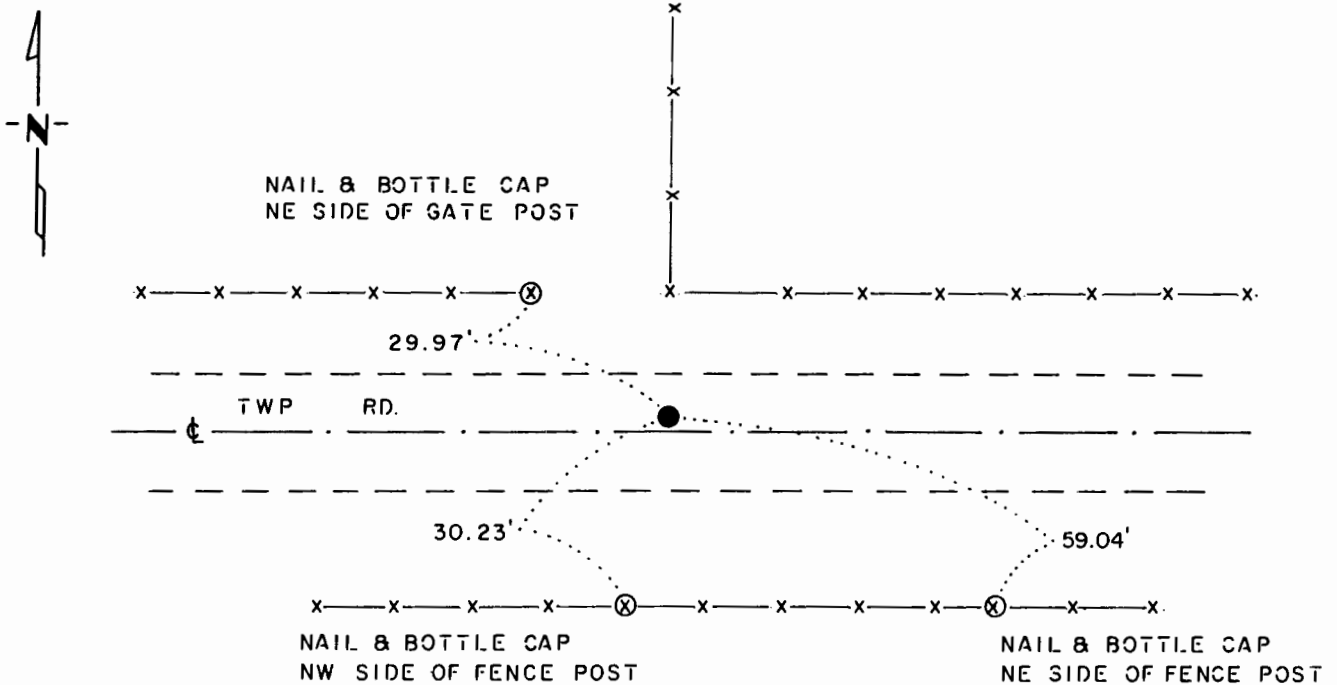
At the corner location shown on the sketch:

On _____ found a _____
DATE

left monument as found, lowered monument, removed monument (explain)

On 5-6-76 placed a 1/2" x 18" IRON PIPE
DATE

SKETCH OF REFERENCE TIES



NOTE:

MONUMENT IS
2.4' NORTH OF ϵ E-W ROAD

Statement of evidence relative to this corner location is on back of page.

J. B. M. 3-25-85
G-158

I hereby certify that this document and the data contained herein was prepared by me or under my direct supervision.

Bruce W. Sheppard 12/20/85
SIGNATURE DATE

Registration No. 17003

- Land Surveyor, Professional Engineer
- County Surveyor, County Engineer

OFFICE OF THE COUNTY RECORDER

County of _____

I hereby certify that this document was filed in the Co. Recorders office at _____ .M. on the _____ day of _____ A.D., 19 _____

County Recorder _____

By _____, Deputy

DOCUMENT NO. _____

North Quarter Corner Section 1, Township 105 North, Range 39 West

This corner was originally established by the U. S. General Land Office survey in 1861. The government notes show:

set post, drove charred stake, made mound of earth and sod with trench and pits as per instructions.

In October 1975, the DNR Bureau of Engineering contacted the following for corner information:

Murray County Offices of the Recorder and Highway Engineer
Sioux Engineering of Windom

The following information was obtained from the County Recorder's Office:
A Surveyor's Record Book, contains a survey done in 1903, surveyor not indicated. Survey shows the government mound and stake at corner 2642.5 feet from the northwest corner of Section 1.

In January 1976, the DNR Bureau of Engineering traversed to the area of the corner and set a temporary point on the center line of an east-west road in line with a fence north. The temporary point was found to be:
2640.60 feet from the northeast corner of Section 1
2645.91 feet from the northwest corner of Section 1
2.4 feet south of a line from the northeast corner of Section 1 to the northwest corner of Section 1

Then a position for corner was computed on a line from the northeast corner of Section 1 to the northwest corner of Section 1 and in line with fence north.

Accept the computed position as the location of the corner.

Traverse information is available from the DNR Bureau of Engineering.

73hab